

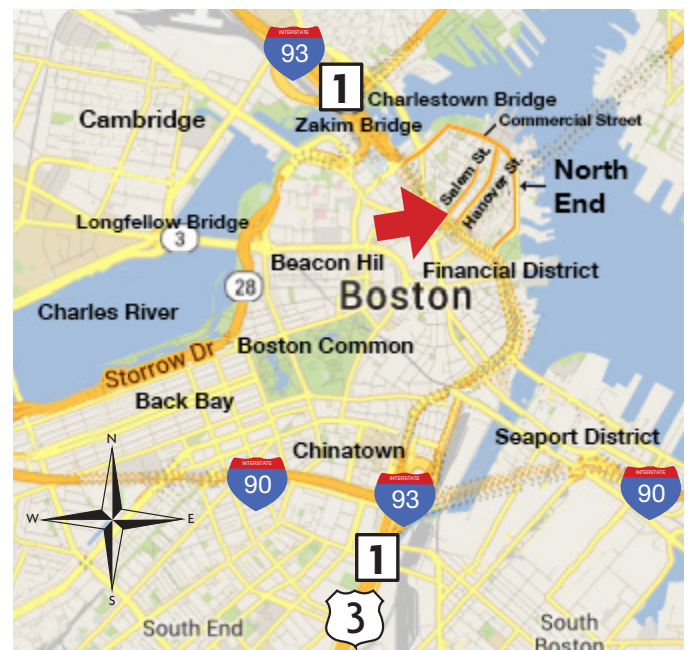
# North End

48-50 Salem Street, Boston, MA 02114



## DESCRIPTION

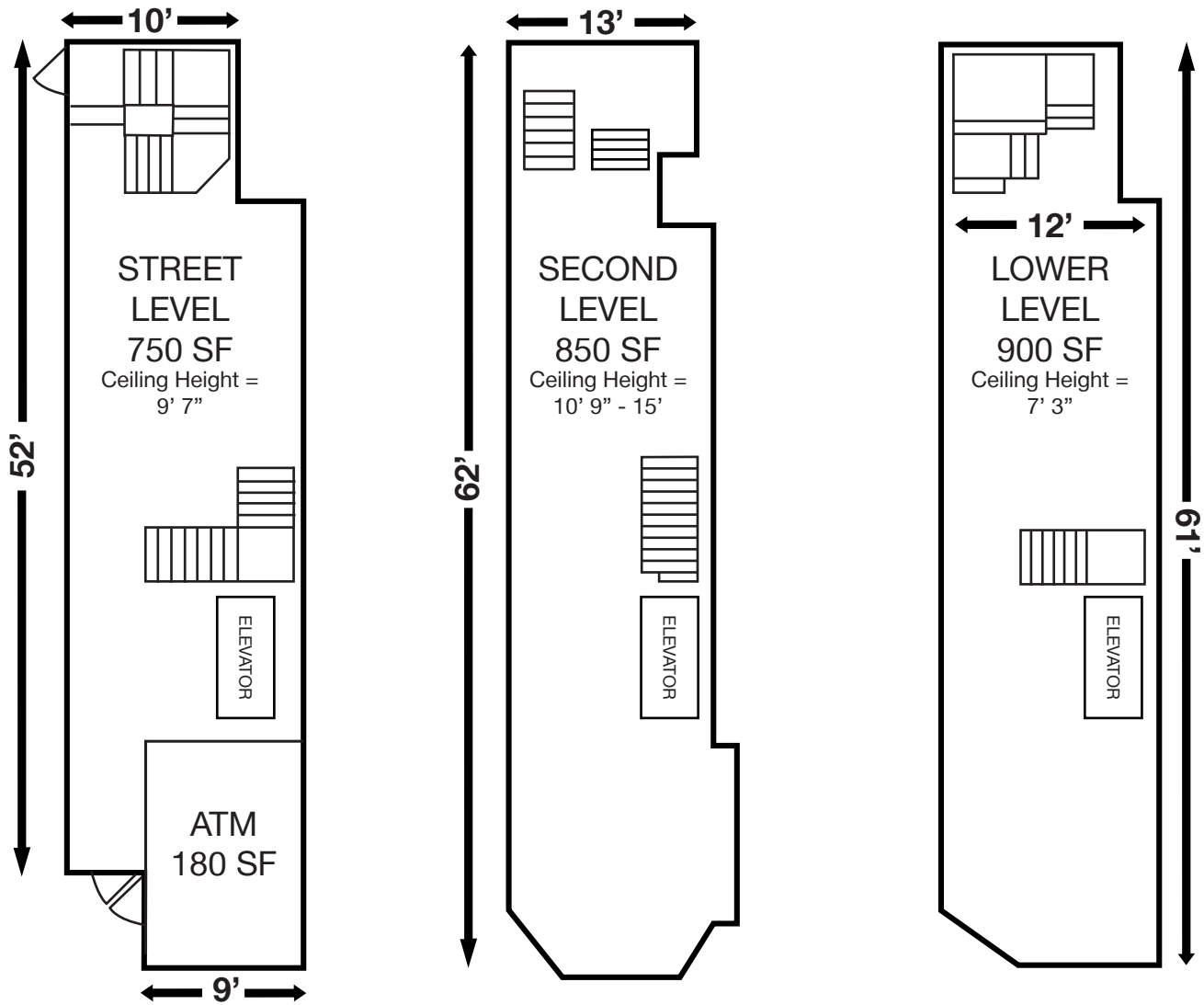
- Fully leased
- Fronts the Rose F. Kennedy Greenway at the entrance to Boston's North End
- Corner of Salem Street & Rose F. Kennedy Greenway
- Prominent location on the Freedom Trail with 4 million tourists visiting annually
- 1/8 mile from Haymarket MBTA stop
- Popular food destination - 1/4 mile from TD Garden Arena hosting Celtics, Bruins, concerts, 200 events per year with 19,600 seats
- Patio seating available - 480 SF/34 seats



## FOR MORE INFORMATION

Evan Eisenhardt, SVP - Leasing | [eeisenhardt@linearretail.com](mailto:eeisenhardt@linearretail.com) | Office 781.202.3536 | Cell 617.807.0577

# 48-50 Salem Street, Boston, MA



## DEMOGRAPHICS

Radius	Residential Population	Average HH Income	Daytime Population
.5 mile	15,929	\$106,608	96,778
1 mile	46,886	\$112,450	158,792

### FOR MORE INFORMATION

Evan Eisenhardt, SVP - Leasing | [eeisenhardt@linearretail.com](mailto:eeisenhardt@linearretail.com) | Office 781.202.3536 | Cell 617.807.0577

# 48-50 Salem Street, Boston, MA



— The Freedom Trail



## FOR MORE INFORMATION

Evan Eisenhardt, SVP - Leasing  
eeisenhardt@linearretail.com

☎ 781.202.3536 | ☎ 617.807.0577

5 Burlington Woods Drive, Suite 107 | Burlington, MA 01803 | ☎ 781.273.5665 | ☎ 781.273.5683

[linearretail.com](http://linearretail.com)

UPDATED: 11/04/2021