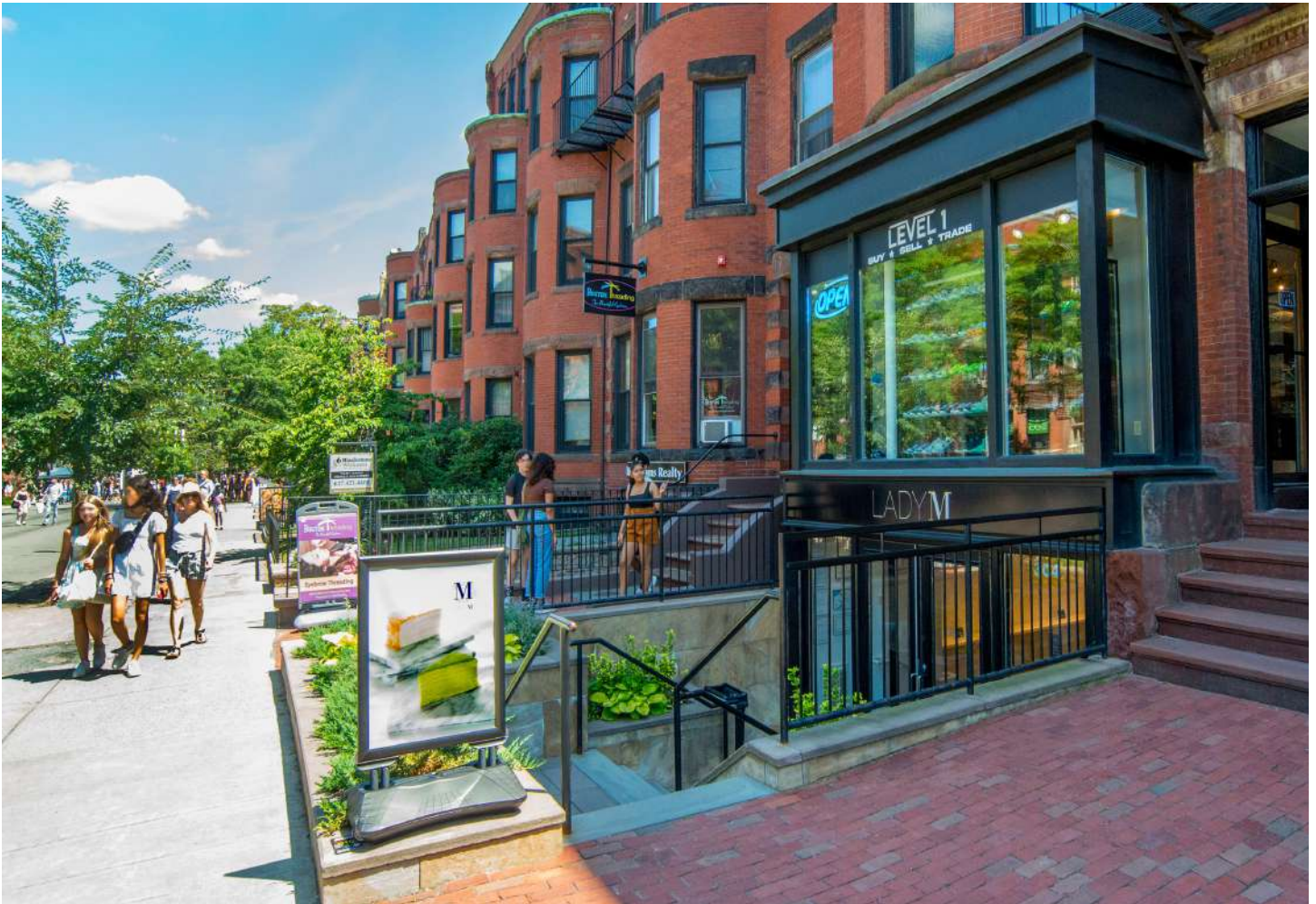


Back Bay

304 Newbury Street, Boston, MA 02116



DESCRIPTION

- Fully Leased
- Retail condo located on the south side of the Gloucester/Hereford Newbury Street block
- Area retailers: Anthropologie, Nike, Patagonia, Lululemon, The North Face, Ministry of Supply, Madewell and more
- Parking space available in rear
- Current low level tenant: LadyM Confections
- Over 761,000 annual visitors to Newbury St.*

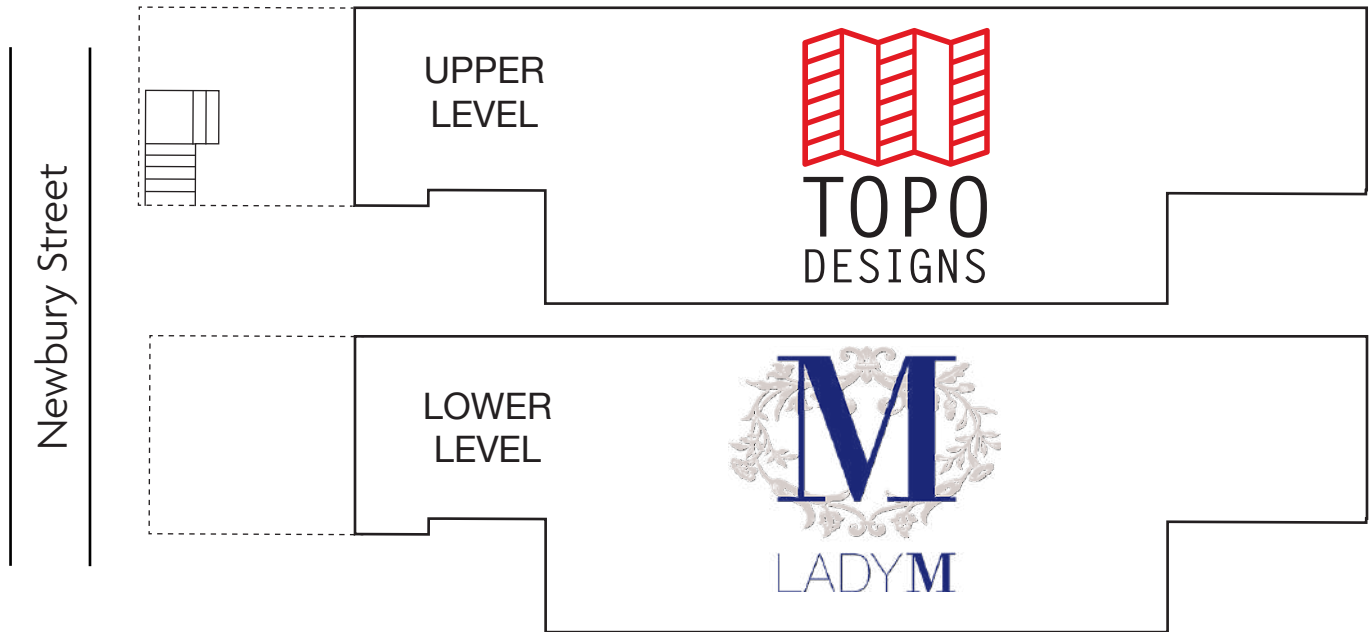
*Source: Placer.ai



FOR MORE INFORMATION

Evan Eisenhardt, SVP - Leasing | eisenhardt@linearretail.com | Office 781.202.3536 | Cell 617.807.0577

304 Newbury Street, Boston, MA



SITE DATA

- Located on the Newbury Street shopping corridor
- ~48,000 employees work within 1/2 mile
- Back Bay is the 2nd largest office sub-market in New England with over 16 million SF of space
- 3 blocks from 176,480 SF Hynes Convention Center
- Back Bay is home to 50% of Boston's hotels
- 2 blocks from MBTA Green Line Copley Station and Hynes Convention Center T stops



DEMOGRAPHICS

Radius	Residential Population	Average HH Income	Office Population
.5 mile	29,463	\$150,568	49,186
1 mile	99,522	\$160,036	164,253



FOR MORE INFORMATION

Evan Eisenhardt, SVP - Leasing

eisenhardt@linearretail.com | linearretail.com

304 Newbury Street, Boston, MA



FOR MORE INFORMATION

Evan Eisenhardt, SVP - Leasing

eisenhardt@linearretail.com | linearretail.com