

# Central Plaza

74-102 Central Street, Wellesley, MA 02482

**Space for Lease**



## DESCRIPTION

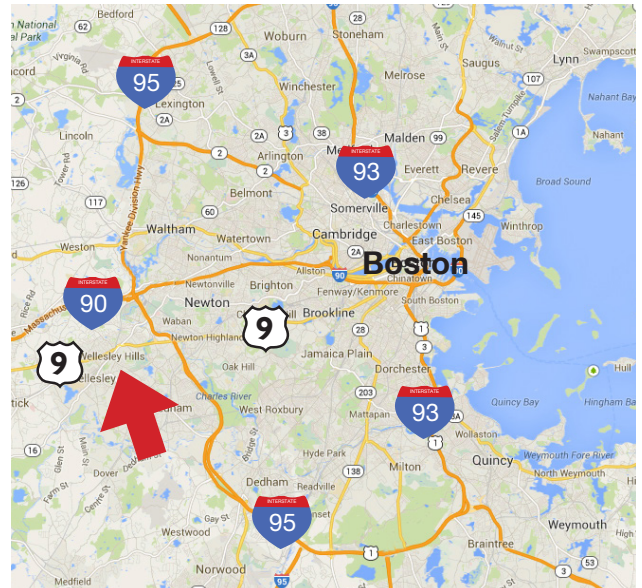
- 51,000 SF shopping center
- Dominant block in downtown Wellesley's high-end Central Street shopping district
- Area Schools:
  - Wellesley College .1 Miles (2,400+ Students)
  - Babson College 2 Miles (2,750+ Students)
  - Dana Hall School (450+ Students)
  - Mass Bay Community College (6,000+ Students)
- Area retailers: Lululemon, Orange Theory, Faherty, Starbucks, Ardan Medspa, Chase Bank
- Central Street shopping district with over 356,000 annual visitors\* (\*Source: Placer.ai)

## SITE DATA

<b>Space Available:</b>	Street Level: 2,400 SF - 3,992 SF (Divisible) Lower Level: 2,716 SF
<b>Parking:</b>	115 space dedicated lot
<b>ATD:</b>	17,000 Average Daily Cars

## DEMOGRAPHICS

Radius	Residential Population	Average HH Income	Office Population
1 mile	10,476	\$280,679	5,259
2 mile	28,558	\$304,221	12,645
3 mile	59,111	\$278,781	31,239



## FOR MORE INFORMATION

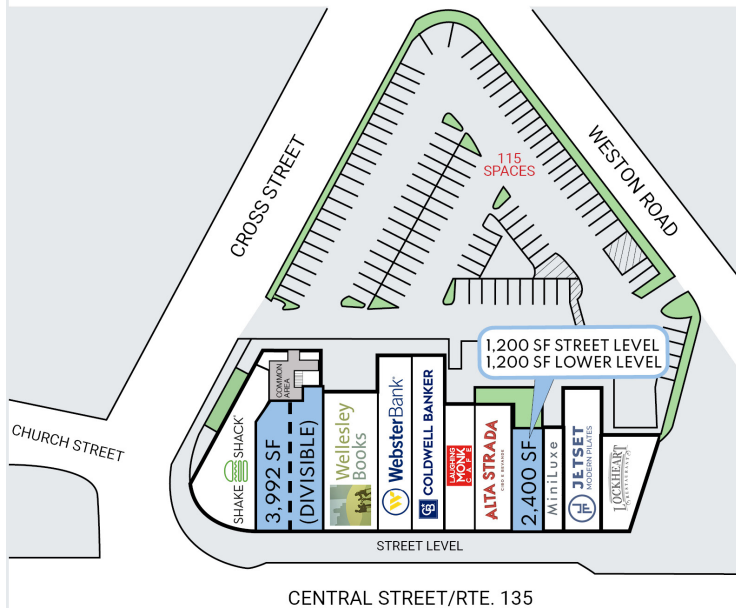
**Evan Eisenhardt**, SVP - Leasing | [eeisenhardt@linearretail.com](mailto:eeisenhardt@linearretail.com) | **Office** 781.202.3536 | **Cell** 617.807.0577

**Adriana Major**, Senior Leasing Representative | [amajor@linearretail.com](mailto:amajor@linearretail.com) | **Office** 781.202.3555 | **Cell** 603.391.2502

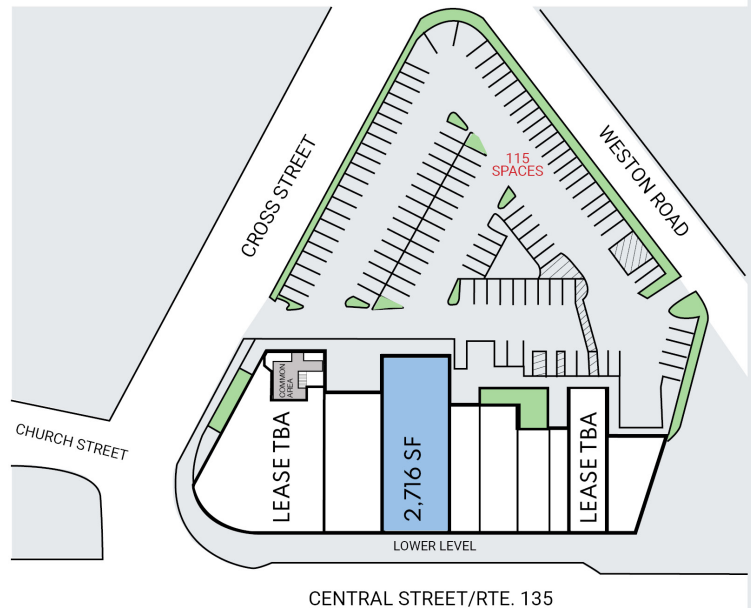


# Central Plaza 74-102 Central Street, Wellesley, MA 02482

STREET LEVEL



LOWER LEVEL



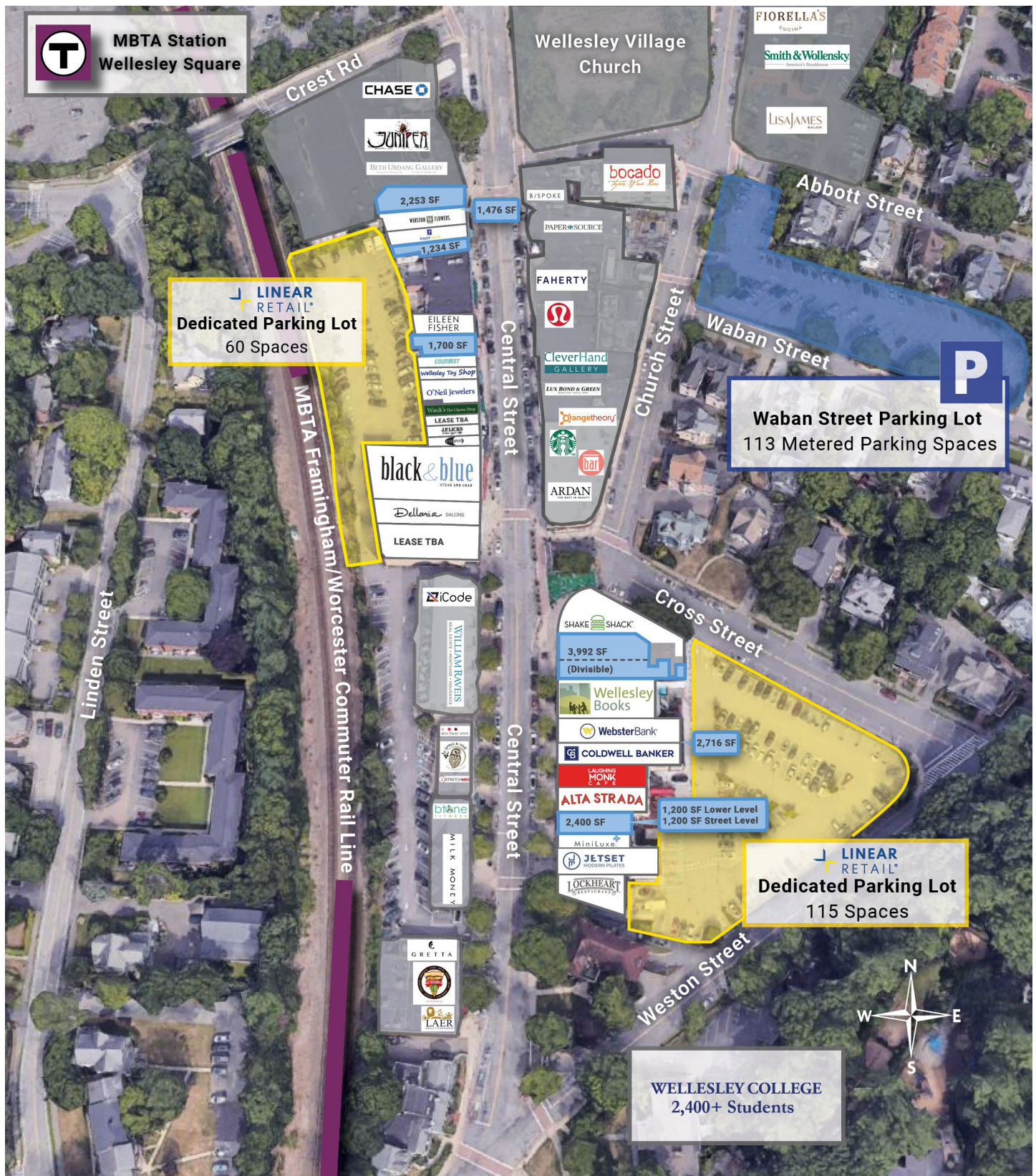
## FOR MORE INFORMATION

**Evan Eisenhardt**, SVP - Leasing | [eeisenhardt@linearretail.com](mailto:eeisenhardt@linearretail.com) | **Office** 781.202.3536 | **Cell** 617.807.0577

**Adriana Major**, Senior Leasing Representative | [amajor@linearretail.com](mailto:amajor@linearretail.com) | **Office** 781.202.3555 | **Cell** 603.391.2502



# Central Plaza 74-102 Central Street, Wellesley, MA 02482



## FOR MORE INFORMATION

Evan Eisenhardt, SVP - Leasing | [eeisenhardt@linearretail.com](mailto:eeisenhardt@linearretail.com) | Office 781.202.3536 | Cell 617.807.0577

Adriana Major, Senior Leasing Representative | [amajor@linearretail.com](mailto:amajor@linearretail.com) | Office 781.202.3555 | Cell 603.391.2502